



# Bethnal Student Living

- Affordable Prices <
- Self Catered Studio Apartments <
- Multilingual Staff <
- Central Location <
- Rooms Available all year round <
- Flexible Conditions <



## *Bethnal Student Living*

*Are You looking for accommodation in London?*

**DON'T LOOK ANY FURTHER**

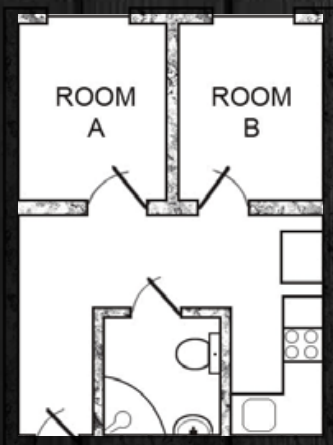
## Who We are

Bethnal Student Living is a private hall that offers the vibe of a university residence and the independence of a shared flat, at affordable prices and in one of the quirkiest areas in London. The majority of the rooms are single or twins, although a few multiple units are available.

The studio flats have a maximum of two rooms and boast en suite toilet & shower, kitchenette, oven, fridge & freezer.

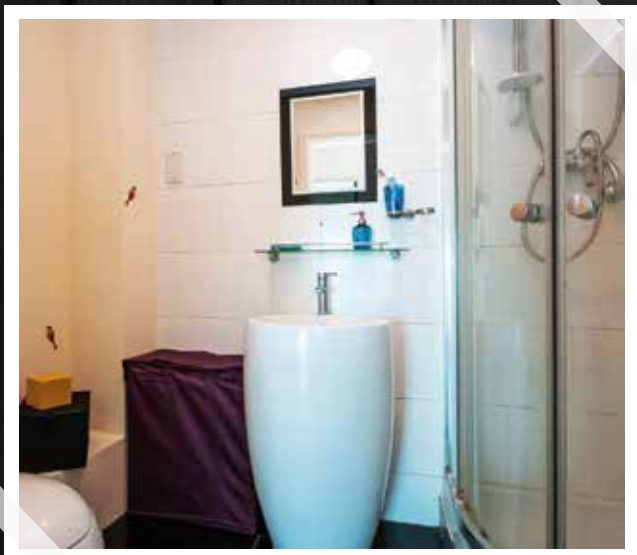
We welcome students from all over the world, any length of stay and any time of the year.

## The Unit



Room size  
approx.  
8-9 sqm

## The Rooms



## Features and Facilities



FREE INTERNET ACCESS



24/7 ONSITE SUPPORT TEAM



ALL BILLS INCLUDED - EXCEPT ELECTRICITY



NO CURFEW



CLEANING OF COMMUNAL AREAS



SATELLITE TV



CCTV



ONSITE LAUNDRY



MULTILINGUAL STAFF

## Prices and Conditions

10-19 WEEKS	SINGLE	TWIN	TRIPLE LUX	4 BEDDED	6 BEDDED
	£208.00	£127.00	£139.00	£105.00	£94.00

- 3 WEEKS' DEPOSIT
- NO ELECTRICITY INCLUDED
- NO BEDDING, TOWELS OR KITCHEN UTENSILS INCLUDED (Price at the reception £50)
- 2 WEEKS' NOTICE (AFTER COMPLETION OF THE CONTRACT)
- BOOKING FEE: 1 WEEK
- IF CANCELLED WITH LESS THAN 15 DAYS WEEKLY PAYMENTS (In advance)
- FIRST PAYMENT 2 WEEKS' RENT IN ADVANCE + DEPOSIT
- MINUS THE BOOKING FEE.



## Location

Bethnal Student Living is situated only a 5 minute walk from Bethnal Green tube station, on the Central line. The centre of London is seven stops and Liverpool Street Station one stop away.

Only a short distance from Shoreditch, Brick Lane and Old Street, Bethnal Student Living is in prime location for some of the best known nightlife. However, for those who prefer a more tranquil setting, Regent Canal and Victoria Park can be found just around the corner. The residence is well connected with the majority of London Universities.

